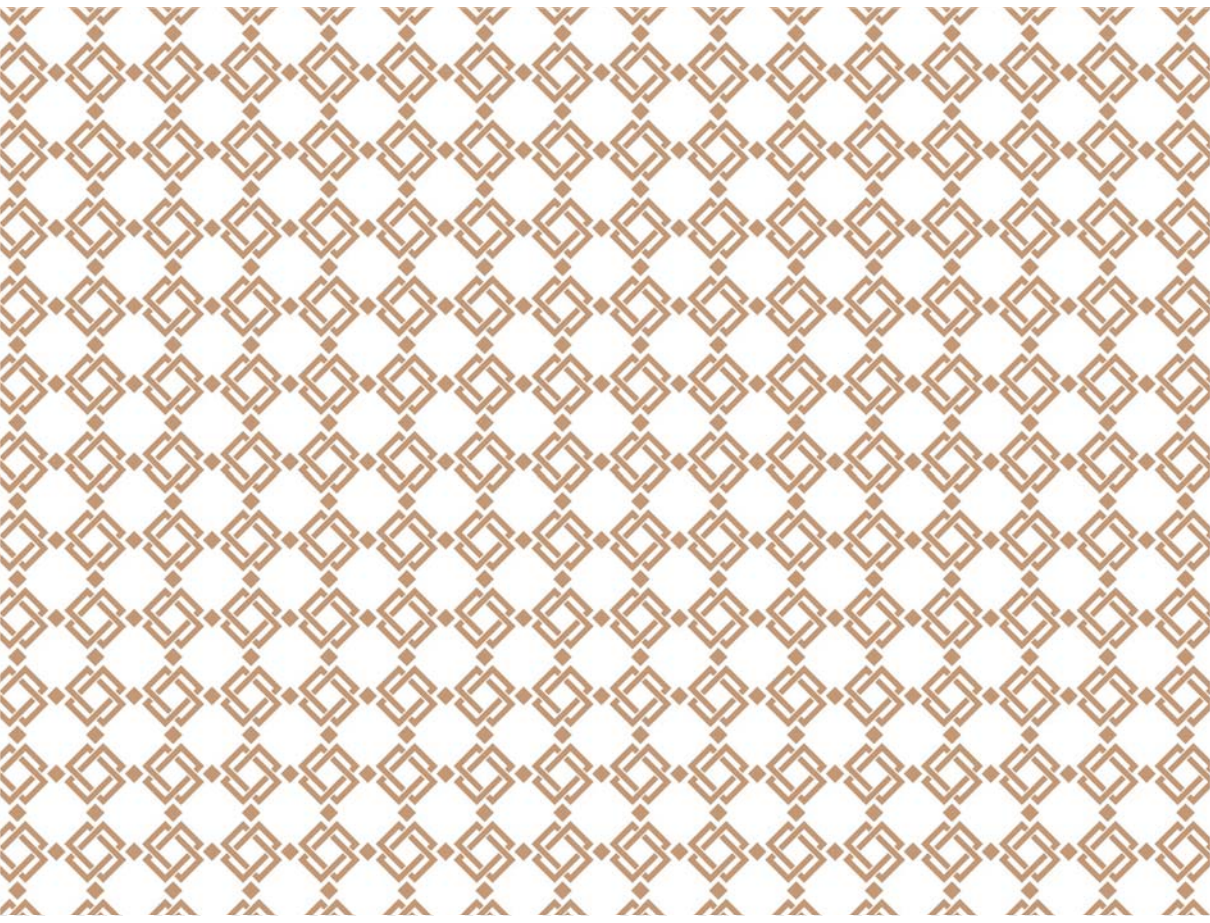


COLLECTION

LIMITED EDITION TREASURE CHESTS



GORDYUS



ABOUT GORDYUS

Gordyus manufactures carefully designed luxury treasure chests. These jewel-boxes are exciting and mystical ornaments of room interiors since the design is created in a way to encrypt hidden symbols referring to the European and the free-mason cultural background. Gordyus products are secured by innovative combination locker mechanisms that can be opened up by a password only, preset by their owners. Gordyus treasure chests are precious and exclusive presents for company executives and high priority clients.

Mr. Gergely Csepai
General Executive

Mr. Zoltan Mosonyi
General Executive

ROOTS

The Gordyus logo has got ancient cultural roots dating back to 4,000 years; however, it is modernized and made hidden in itself.

The shield knot is an ancient universal symbol. The symmetric form of interlocking quadrants has been used for thousands of years as the sign of protection by various cultures. The eldest form has Mesopotamian roots, but it was most commonly used by the Celts and Ancient Norse. The purpose of the knot was to protect the signed one by conjuring the gods of the four corners of the Earth, or as better known the four Archangels. The Comancini knot is the best known form of the shield knot in Europe. It is strongly related to the Comancine masters who lived on Isola Comancini in Lombardia and were the predecessors of the freemasons. It can be found on numerous magnificent European buildings' foundation stones.

THE GORDYUS

The logo of Gordyus is a modern expression of the Shield knot. When the Gordyus logo is rotated by 90 degrees and projected over the original, the correspondance reveals.

Other occult symbols of the Gordyus cryptex shall remain secret.

THE CRYPTEX

This exceptional piece of useful art has made its grand appearance in the best selling novel The Da Vinci Code. The original function of the cryptex was to protect secret messages and prevent unauthorized persons from reading them by ensuring access with a preset password only.

The word cryptex is a combination of the words cryptology and codex. The cryptex is a fascinating present for company executives and high priority clients. The carefully designed marble cryptex is an exciting, mystical and elegant ornament that uniquely enhances the room enterieur. All Gordyus cryptexes are secured by a precise combination locker mechanism that can only be opened by a password set by the owner.



CHROMSYLVANIA

CHROMSYLVANIA

Chromsylvania is the combination of the word “chrome” and the latin word for “forest”.

www.gordyus.com

DECORATION: Bamboo leaf markings engraved in Guatemalan green marble. Also, the rules of the golden ratio apply: the ratio between the width of the code ring and the marble ring is the same as the ratio between the marble ring and the combined width of the code and marble rings.

Chromsylvania calls to mind the chilly, intimate autumn night in a forest which is only yours. It is an excellent present for those in harmony with nature. It best finds its place in the living room, close to the “green corner”, where it melts into the environment naturally.

DIAMETER: 80 mm (3.2")
LENGTH: 297 mm. (11.7")
WEIGHT: 3,0 kg (6.6 lb)
SERIAL NUMBER: Yes



SHOGUN

SHOGUN

Inspired by the black and white Japanese ink-drawings.
Bamboo leaf markings engraved in white Carrara marble.

www.gordyus.com

Also, the rules of the golden ratio apply: the ratio between the width of the code ring and the marble ring is the same as the ratio between the marble ring and the entire cryptex.

The straight lines of the black bamboo leaf cutting their way in every direction on the white marble gives Shogun a warrior's attitude. It's the perfect match for someone who never settles for the less. Its place is on a dark table where it deliberately stands out by its whiteness for all to see.

DIAMETER: 80 mm (3.2")
LENGTH: 297 mm (11.7")
WEIGHT: 3,0 kg (6.6 lb)
SERIAL NUMBER: Yes



BLACK SHOGUN

BLACK SHOGUN

Bamboo leaf markings engraved in black metal. Also, the rules of the golden ratio apply: the ratio between the width of the code ring is the same as the ratio between the decoration ring and the combined width of a code ring and a decoration ring.

www.gordyus.com

Black Shogun is made of pure metal. The almost invisible bamboo leaf engravings make it even more mystical and enigmatic preserving its function to be known to its owner only. The pure plack decoration enhances its elegance, makes it a silent dignity of your room enterieur. Mostly recommended for people enthusiastic for minimal design.

DIAMETER: 80 mm (3.2")
LENGTH: 297 mm (11.7")
WEIGHT: 3,0 kg (6.6 lb)
SERIAL NUMBER: Yes



GREENAISSANCE

GREENAISSANCE

This cryptex was born from the combination of stone's color and the renaissance.

www.gordyus.com

Conventional flower motifs of the Renaissance era engraved in Guatemalan green marble. Also, the rules of the golden ratio apply: the ratio between the width of the code ring and the marble ring is the same as the ratio between the marble ring and the entire cryptex.

Greenaissance is very lively, full of contradictions which make it even more interesting. The simplicity of the Renaissance flower motifs complements the rich texture of the green marble. It's for someone with a complex personality who can easily adapt to different situations – just like this cryptex. Place it in a study or on a bookshelf – it will find its place!

DIAMETER: 80 mm (3.2")
LENGTH: 297 mm (11.7")
WEIGHT: 3,0 kg (6.6 lb)
SERIAL NUMBER: Yes



CRYOGENESIS

CRYOGENESIS

www.gordyus.com

The name was inspired by the piety and the clearness of its forms, just like a heavenly revelation. Conventional flower motifs of the Renaissance era engraved in white Carrara marble. Also, the rules of the golden ratio apply: the ratio between the width of the code ring and the marble ring is the same as the ratio between the marble ring and the entire cryptex.

Cryogenesis represents the perfect cleanliness and refreshing innocence. It's the ideal gift for those who can appreciate simplicity at its greatest. It looks elegant on a white surface, like a stone counter where it nicely blends into the environment while enriching its every aspect at the same time.

DIAMETER: 80 mm (3.2")
LENGTH: 297 mm (11.7")
WEIGHT: 3,0 kg (6.6 lb)
SERIAL NUMBER: Yes



BLACK RENAISSANCE

BLACK RENAISSANCE

www.gordyus.com

A modern interpretation of the Renaissance flower motifs engraved in black metal. Also, the rules of the golden ratio apply: the ratio between the width of the code ring is the same as the ratio between the decoration ring and the combined width of a code ring and a decoration ring.

Black Renaissance is made of pure metal. The almost invisible Renaissance markings on the black surface of the metal decoration rings leaves the artifact in secret of its function. It is elegant and enigmatic fitting best in minimalist room enterieurs where the cryptex may reign in silent dignity.

DIAMETER: 80 mm (3.2")
LENGTH: 297 mm (11.7")
WEIGHT: 3,0 kg (6.6 lb)
SERIAL NUMBER: Yes



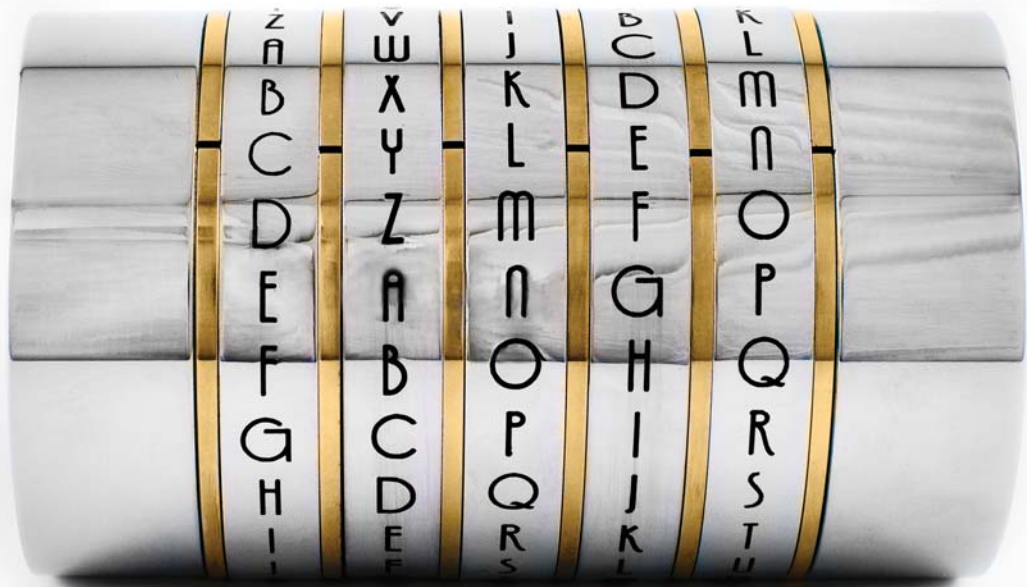
MAGNUS ORIENSIS

MAGNUS ORIENSIS

www.gordyus.com

Bamboo leaf markings engraved in gold plated brass. Also, the rules of the golden ratio apply: the ratio between the width of the code ring and the marble ring is the same as the ratio between the marble ring and the entire cryptex. Wherever it may be placed, Magnus Oriensis is a true jewel of a room. It seeks out attention, just like the person it's given to. You either love it or hate it, but you cannot ignore it. It's the perfect match for someone who likes gloss, and has an extreme personality.

DIAMETER: 80 mm (3.2")
LENGTH: 297 mm (11.7")
WEIGHT: 5.0 kg
SERIAL NUMBER: Yes



MINI

The code rings are separated by laser-cut stainless steel rings. We designed this smaller cryptex for those who love simple, minimalist forms. This product thrives for perfectionism, a beauty in itself, without extra decoration. Because sometimes, less is in fact more. It looks natural on a mantelpiece crafted in the same spirit.

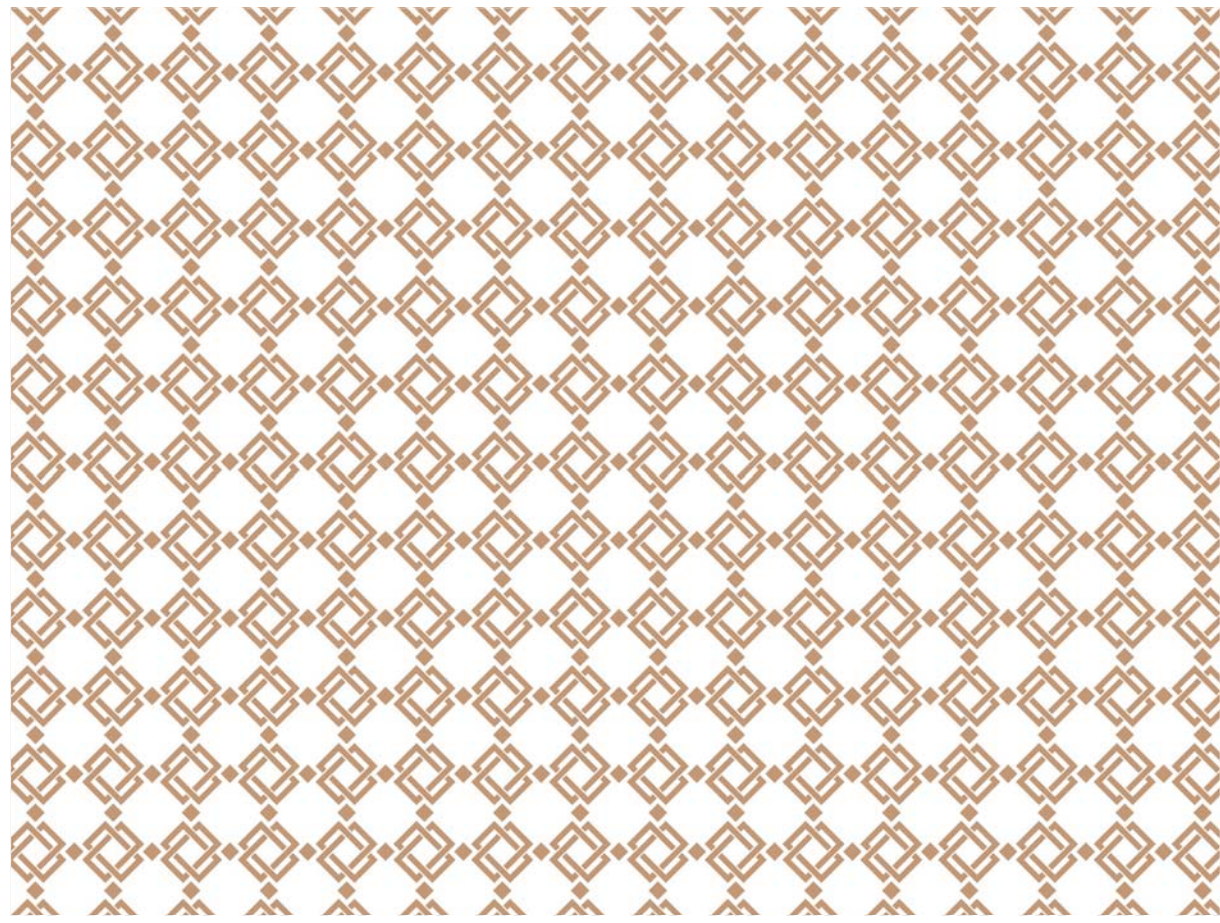
DIAMETER: 80 mm (3.2")
LENGTH: 133 mm (5.3")
WEIGHT: 1.8 kg (2.2 lb)
SERIAL NUMBER: No

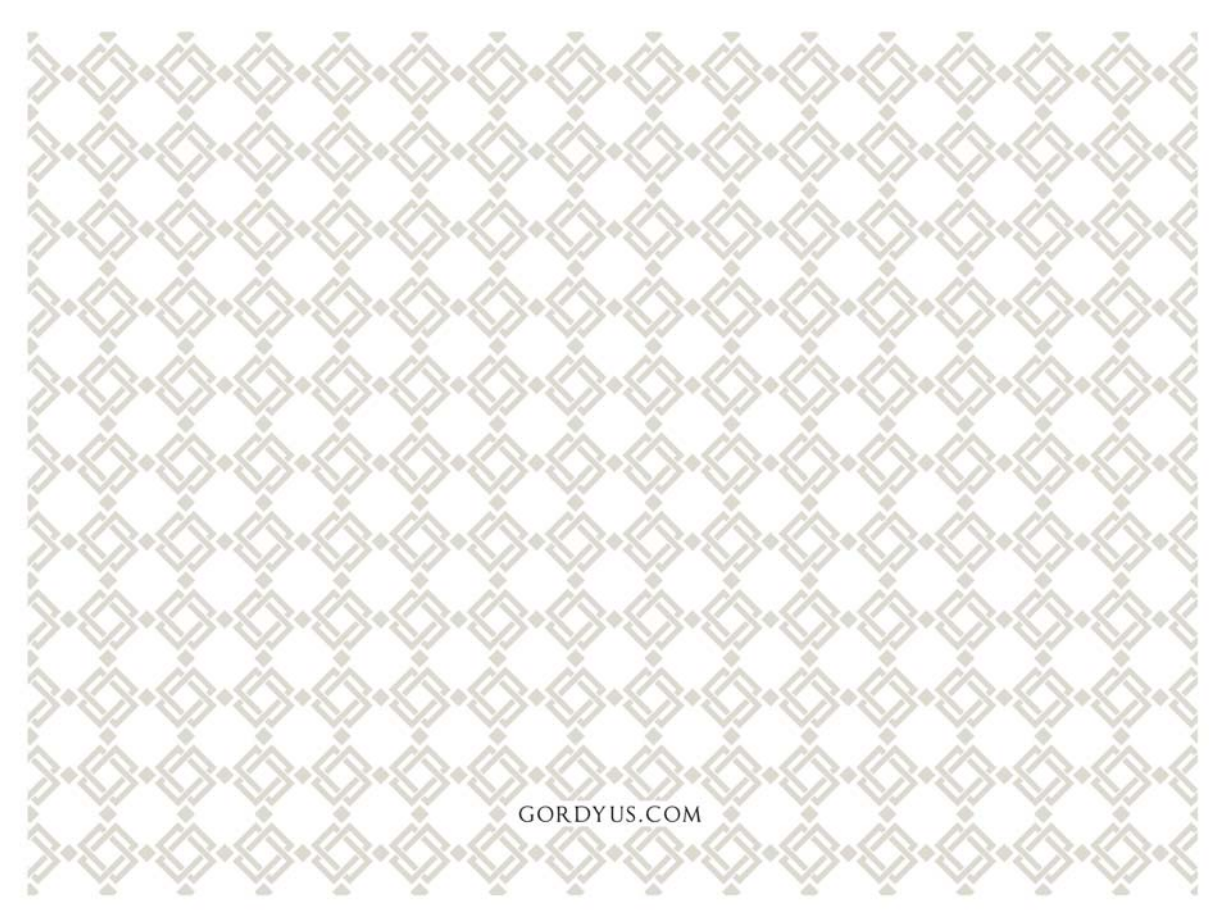


CONTACT

For new product releases follow Gordyus News
by visiting our website at gordyus.com.

www.gordyus.com





GORDYUS.COM